



7-DAY SAFARI TOUR IN UGANDA
THROUGH RWANDA-KIGALI
TRAVEL ITINERARY



Over View

Arrival: You will be collected from Entebbe National airport.
Accommodation before the tour starts can be arranged at an extra cost.

UGANDA THROUGH *Rwanda Safari*

Start from Kigali (before 11am), drive to Katuna Boarder and cross into Uganda to Kanungu where we'll spend a night. Upon your arrival at Rwanda – Uganda boarder, you'll be picked up and cross into Uganda by our staff/your guide and overnight in Ishasha Sector (i.e. Queen Elizabeth NP). This place is known for its tree-climbing lion population, undertake a game drive before transfer to Jinja. Expect a game drive, a boat trip on the Kazinga Channel. On day 5, you will do a Ngamba Island tour before signing up to your destination for the rest of the days

Fee:

\$2,030 - ADULTS
\$1,250 - CHILDREN

Per Person

Itinerary

Start Rwanda (Uganda -Rwanda boarder
Uganda
Day 1 Ishasha Sector
Day 2 Queen Elizabeth NP (Climbing Lion)
Day 3 Jinja (Source of the Nile)
End (Day 4) Entebbe - Ngamba Island



Day 1

Ishasha Sector

Day 1: Game viewing Ishasha for tree-climbing lions and connect north Queen

Be up early, have breakfast and embark on a transfer to the Ishasha sector of Queen Elizabeth NP – famously known for its tree-climbing lion population. Once there, undertake a game drive in search of this rare species of lions. The chance of spotting these lions stands at about 60-70% but sometimes they are hard to spot (most especially when they are down in the grassland looking for prey). Should you get the chance to spot the lions up in the tree, the sight is picturesque and unforgettable. From Ishasha (south), exit and head to the booked accommodation in the north sector. Check in and take rest. Optional: If interested, you may consider a late afternoon-to-evening game drive/safari in the Kasenye plains.

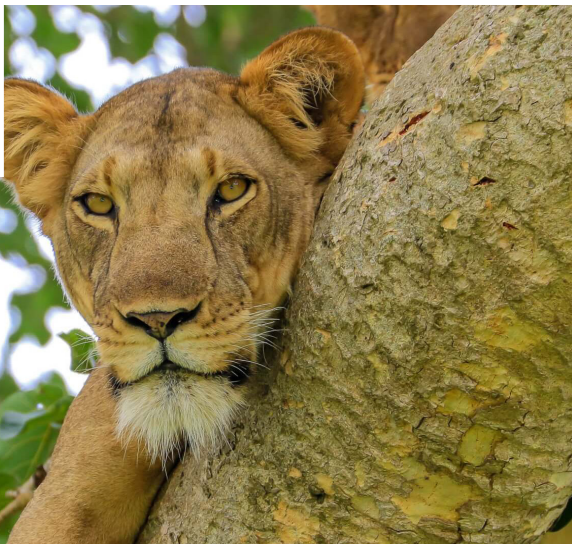
Accommodation

Irungu Forest Safari Lodge-Budget Level

Transfer Time: Approx. 6-7 hours.

Meals & Drinks

- All meals included
- Drinking water (Other drinks not included)



Day 2



Queen Elizabeth National Park (Uganda)

Day 2: Morning game drive and afternoon boat trip along the Kazinga Channel.

Be up early and have your breakfast. Proceed for a morning game drive in the Kasenyi plains and be on the look for Cape buffalos, herds of elephants plus lions, leopards (though hard to spot) among others. Return to the accommodation for some rest time and lunch. After lunch, you will go for a 2-hour boat trip on the Kazinga Channel that connects Lakes George and Edward. During the trip, the sight of wildlife including giant hippos, elephants and crocodiles among others will fascinate you. You will also see many varieties of birds at the water shores. *After the boat trip, you can decide either to return to the lodge to rest or first proceed for a brief late afternoon game drive and thereafter, return to the lodge..



Accommodation

Irungu Forest Safari Lodge

- Mid-range lodge located just outside Queen Elizabeth NP

Meals and Drinks

- All meals included
- Drinking water (Other drinks not included)



Day 3

Jinja (Town, Uganda)

Day 3: Transfer to Jinja the source of the Nile where we'll be for 2 days

Today we will have a leisurely morning breakfast before getting back on the road and heading to the bustling town of Jinja, we will enjoy one last boat cruise together this time to see the source of the Nile on Lake Victoria. On our way from Jinja the next day, we'll make a stopover at Sezibwa Falls to see the spiritual healing waters. Jinja is the tourist capital of Uganda, offering numerous optional activities, as well as restaurants and bars in the busy town center. Your time here can be spent at your own accord.

Optional activities; White water rafting, Jet boat, Bunjee jumping, Horse riding, Quad biking, Cycling and more.

Accommodation

The Haven Eco River Lodge

- Mid-range lodge located in or near Jinja

Meals and Drinks

- All meals included
- Soft drinks included (Water or Soda)
- Other drinks not included





Day 4

Ngamba Island (Entebbe)

Day 4: Transfer to Jinja the source of the Nile for 2 days.

We'll take early morning journey to Ngamba Island in Entebbe with a boat cruise out on Lake Victoria to Chimpanzee Sanctuary and have a chance to view chimpanzees feeding. You will also be treated to sights of monitor lizards, birds, and photographic opportunities. Upon reaching at the sanctuary, you will receive a personal orientation by a chimpanzee caregiver and view a feeding of the chimpanzees from the visitors' raised platform area along the edge of the sanctuary fence.

Trip Timings

- Morning viewing between 9.00am – 1.00pm
- Afternoon viewing 12.45pm – 5.00pm

Accommodation

No accommodation (End of tour)

Meals and Drinks

- Breakfast & lunch (Dinner not included)
- Drinking water (Other drinks not included)

End of tour

- Additional accommodation can be arranged for an extra cost.
- You'll be dropped off at the airport



Disclaimer

- This tour is offered by Las Vegas Tours and travel, not Safari Bookings.
- This operator reserves the right to change rates advertised on Safari Bookings.
- If you request changes to this tour, the advertised rates will likely change.
- The exact order, contents and rates of this tour is subject to availability.
- If an accommodation is fully booked, the operator will suggest a comparable alternative.
- Gorilla tracking permits are subject to availability.
- This tour is subject to the terms & conditions of Las Vegas Tours and Travel.



FOR MORE INFORMATION

Tel: +256 393 248 241/+256 703 746 234

Email: info@lasvegastoursandtravels.com

Website: www.lasvegastoursandtravels.com